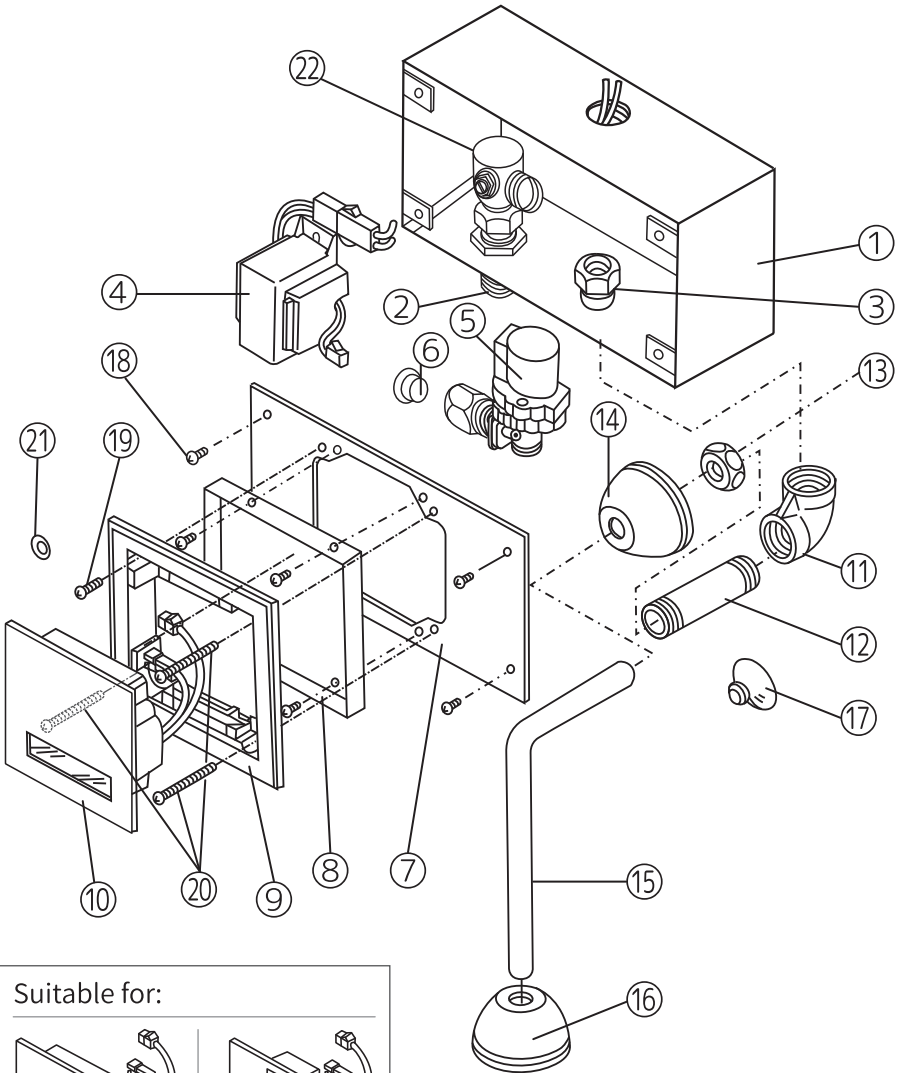


# Hidden Automatic Urinal Flusher Installation and Operation Manual

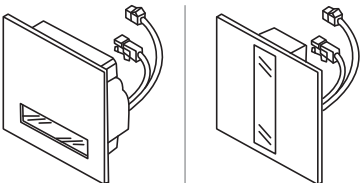
## **Cautions:**

- Please read this manual carefully before installation and use.
- Upon completing the installation, please be sure to hand this manual to the customer.

# Product Parts Disassemble Diagram: (SUS304#model)



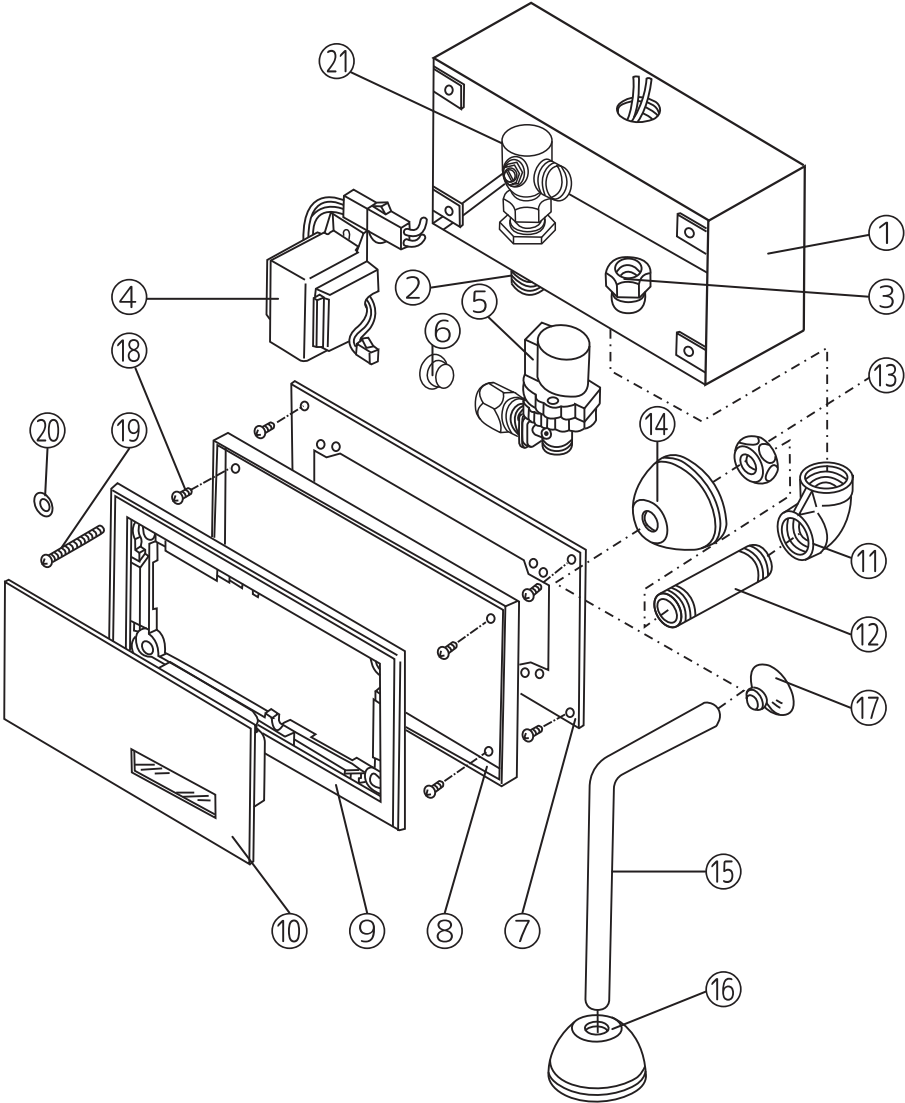
Suitable for:



## Parts list: AC Square concealed flusher

Item	Description	Spec.	Q'ty	Remarks
1	Parts box	Galvanized steel	1	
2	Inlet connector	Copper	1	
3	Outlet connector	Copper	1	
4	Transformer	Silicone steel	1	
5	Solenoid valve set	FRP	1	
6	Filter	SUS304#	1	
7	Outer plate	Galvanized steel	1	
8	Anchor plate	Galvanized steel	1	
9	Outer casing	ABS	1	
10	Sensor Cover	SUS304#	1	
11	Angular pipe union	SUS304#	1	
12	Pipe Fitting Connector	SUS304#	1	
13	Nut	Electro-coppering	2	
14	Deep Pipe Cover Flange	SUS304#	1	
15	L tube	Electro-coppering	1	
16	Deep Pipe Cover Flange	SUS304#	1	
17	Suction cup	Silicone	1	
18	Short screw	M4x0.7 L=12mm	8	
19	Middle screw	M4x0.7 L=18mm	1	
20	Long screw	M4x0.7 L=42mm	3	
21	Stainless steel gasket	SUS304#	4	
22	Flow control valve	Copper	1	

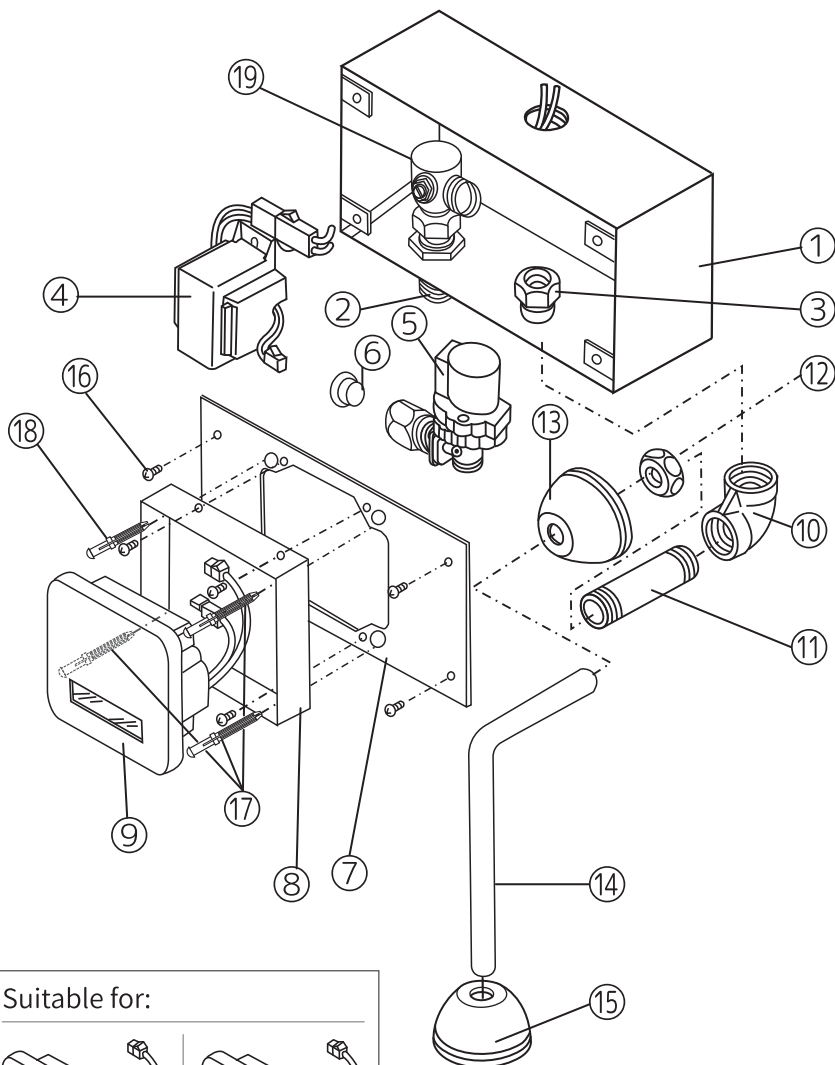
Product Parts Disassemble Diagram: (SUS304#model)



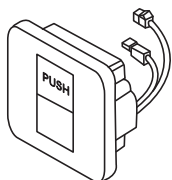
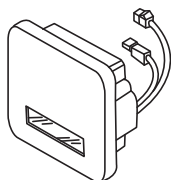
## Parts list: AC Concealed flush plate

Item	Description	Spec.	Q'ty	Remarks
1	Parts box	Galvanized steel	1	
2	Inlet connector	Copper	1	
3	Outlet connector	Copper	1	
4	Transformer	Silicone steel	1	
5	Solenoid valve set	FRP	1	
6	Filter	SUS304#	1	
7	Outer plate	Galvanized steel	1	
8	Anchor plate	Galvanized steel	1	
9	Outer casing	ABS	1	
10	Sensor Cover	SUS304#	1	
11	Angular pipe union	SUS304#	1	
12	Pipe Fitting Connector	SUS304#	1	
13	Nut	Electro-coppering	2	
14	Deep Pipe Cover Flange	SUS304#	1	
15	L tube	Electro-coppering	1	
16	Deep Pipe Cover Flange	SUS304#	1	
17	Suction cup	Silicone	1	
18	Short screw	M4x0.7 L=12mm	8	
19	Long screw	M4x0.7 L=42mm	4	
20	Stainless steel gasket	SUS304#	4	
21	Flow control valve	Copper	1	

# Product Parts Disassemble Diagram: (ABS model)



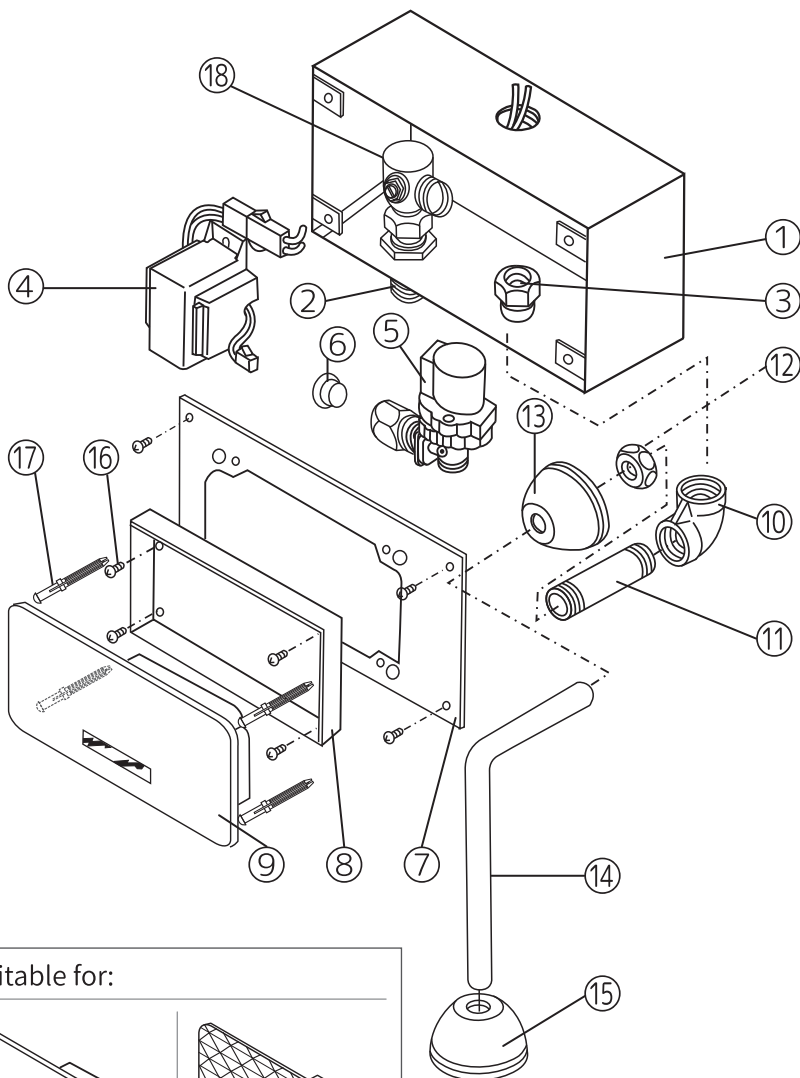
Suitable for:



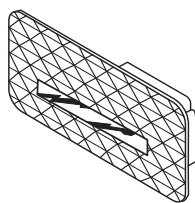
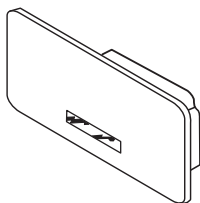
## Parts list: AC Square concealed flusher

Item	Description	Spec.	Q'ty	Remarks
1	Parts box	Galvanized steel	1	
2	Inlet connector	Copper	1	
3	Outlet connector	Copper	1	
4	Transformer	Silicone steel	1	
5	Solenoid valve set	FRP	1	
6	Filter	SUS304#	1	
7	Outer plate	Galvanized steel	1	
8	Anchor plate	Galvanized steel	1	
9	Sensor Cover	ABS	1	
10	Angular pipe union	SUS304#	1	
11	Pipe Fitting Connector	SUS304#	1	
12	Nut	Electro-coppering	2	
13	Deep Pipe Cover Flange	SUS304#	1	
14	L tube	Electro-coppering	1	
15	Deep Pipe Cover Flange	SUS304#	1	
16	Short screw	M4x0.7 L=12mm	8	
17	Panel mount screw (long)	ABS D=9mm L=44mm	3	
18	Panel mount screw (short)	ABS D=9mm L=30mm	1	
19	Flow control valve	Copper	1	

# Product Parts Disassemble Diagram: (ABS model)



Suitable for:

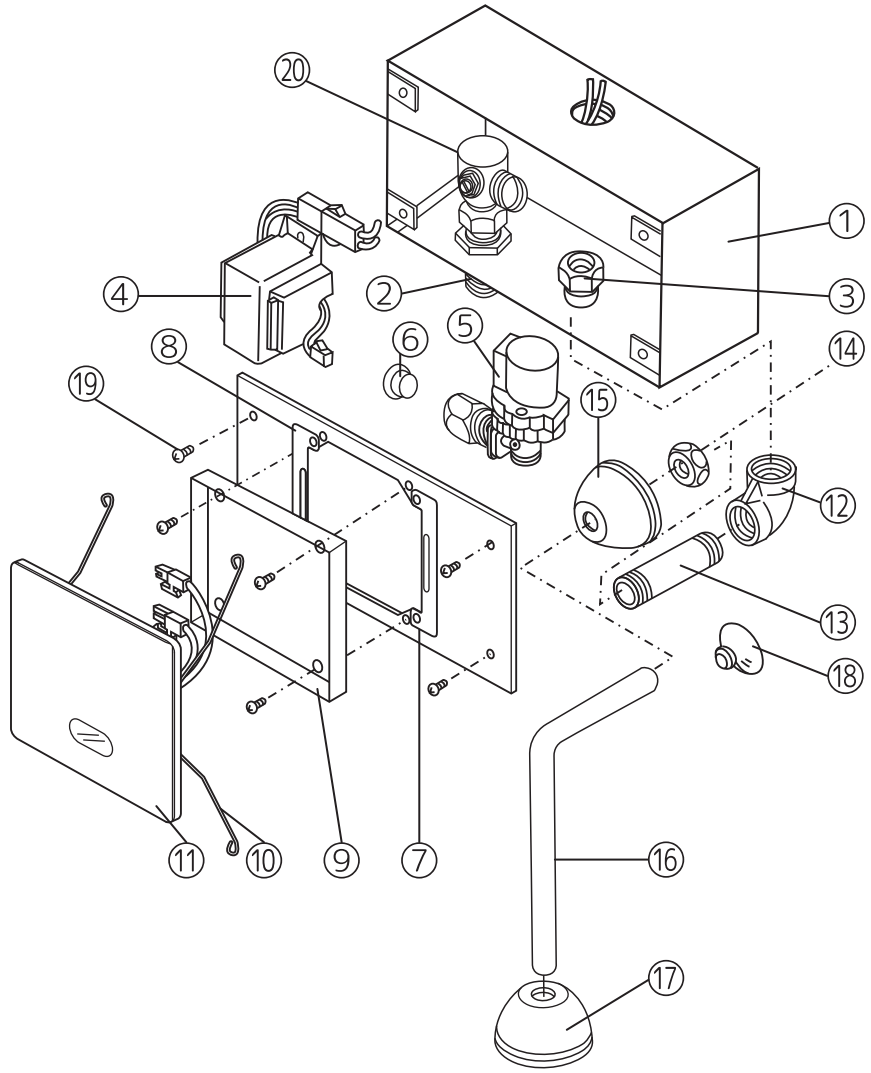




## Parts list: AC Concealed flush plate

Item	Description	Spec.	Q'ty	Remarks
1	Parts box	Galvanized steel	1	
2	Inlet connector	Copper	1	
3	Outlet connector	Copper	1	
4	Transformer	Silicone steel	1	
5	Solenoid valve set	FRP	1	
6	Filter	SUS304#	1	
7	Outer plate	Galvanized steel	1	
8	Anchor plate	Galvanized steel	1	
9	Sensor Cover	ABS	1	
10	Angular pipe union	SUS304#	1	
11	Pipe Fitting Connector	SUS304#	1	
12	Nut	Electro-coppering	2	
13	Deep Pipe Cover Flange	SUS304#	1	
14	L tube	Electro-coppering	1	
15	Deep Pipe Cover Flange	SUS304#	1	
16	Short screw	M4x0.7 L=12mm	8	
17	Panel mount screw (long)	ABS D=9mm L=44mm	4	
18	Flow control valve	Copper	1	

# Product Parts Disassemble Diagram: (GLASS#model)



## Parts list: AC Square concealed flusher

Item	Description	Spec.	Q'ty	Remarks
1	Parts box	Galvanized steel	1	
2	Inlet connector	Copper	1	
3	Outlet connector	Copper	1	
4	Transformer	Silicone steel	1	
5	Solenoid valve set	FRP	1	
6	Filter	SUS304#	1	
7	Outer plate	Galvanized steel	1	
8	Positioning plate adapter	Galvanized steel	2	
9	Anchor plate	Galvanized steel	1	
10	Squeeze spring clip	SUS304#	2	
11	Sensor Cover	Tempered glass	1	
12	Angular pipe union	SUS304#	1	
13	Pipe Fitting Connector	SUS304#	1	
14	Nut	Electro-coppering	2	
15	Deep Pipe Cover Flange	SUS304#	1	
16	L tube	Electro-coppering	1	
17	Deep Pipe Cover Flange	SUS304#	1	
18	Suction cup	Silicone	1	
19	Short screw	M4x0.7 L=12mm	8	
20	Flow control valve	Copper	1	

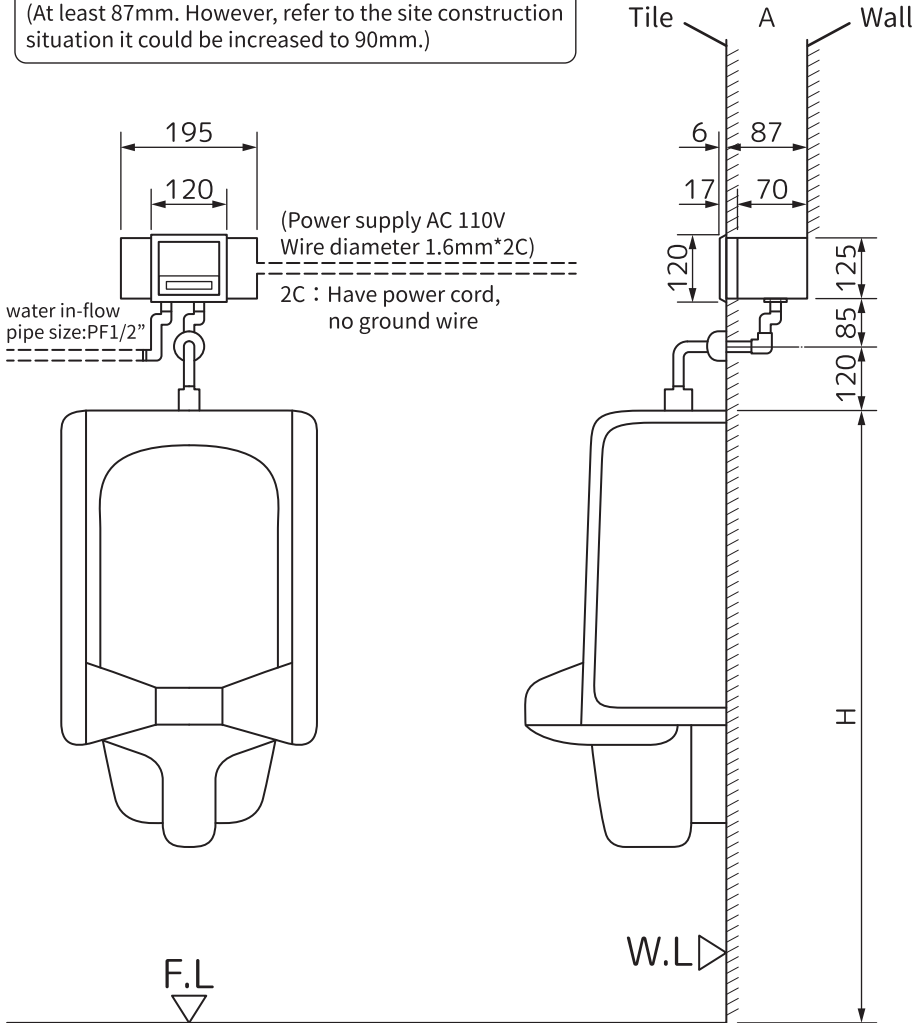
# Standard Installation Diagram

## Model: Square

**Cautions:**

When installing the product, the A dimension depth must be greater than 87mm.

(At least 87mm. However, refer to the site construction situation it could be increased to 90mm.)



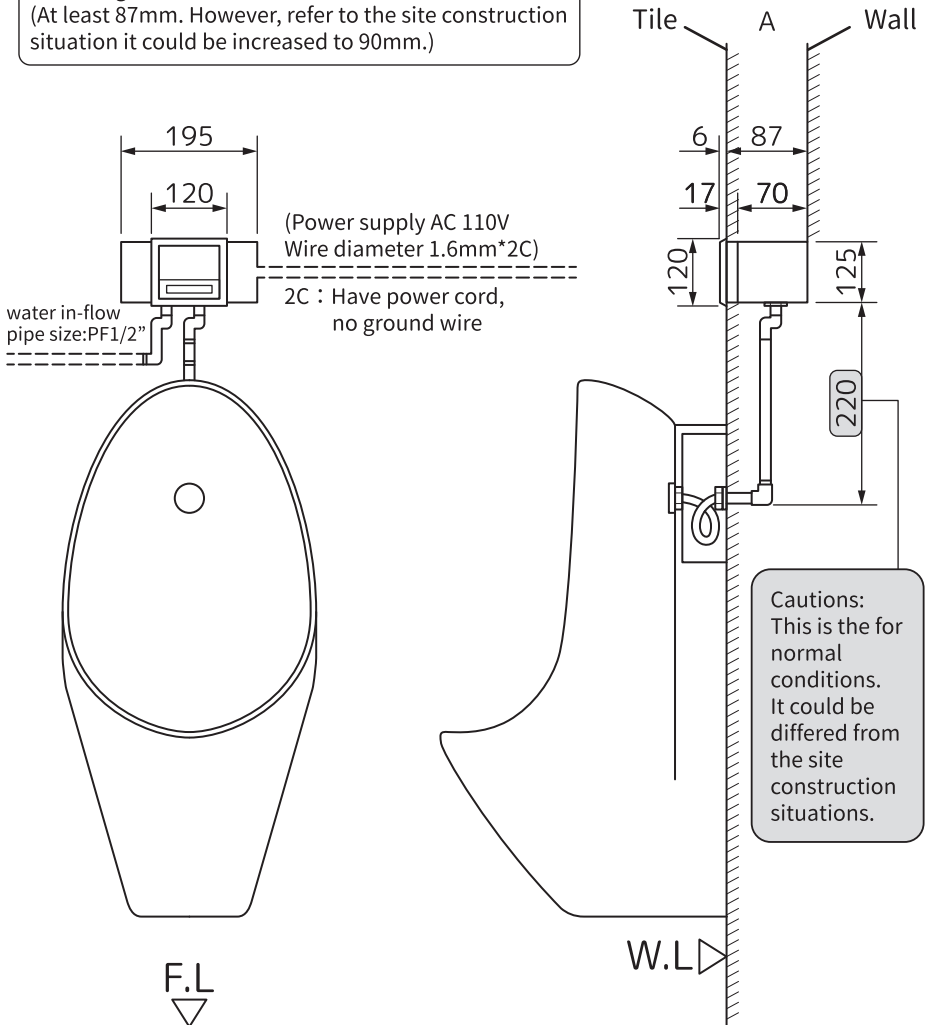
# Back Inlet Installation Diagram

## Model: Square

### Cautions:

When installing the product, the A dimension depth must be greater than 87mm.

(At least 87mm. However, refer to the site construction situation it could be increased to 90mm.)



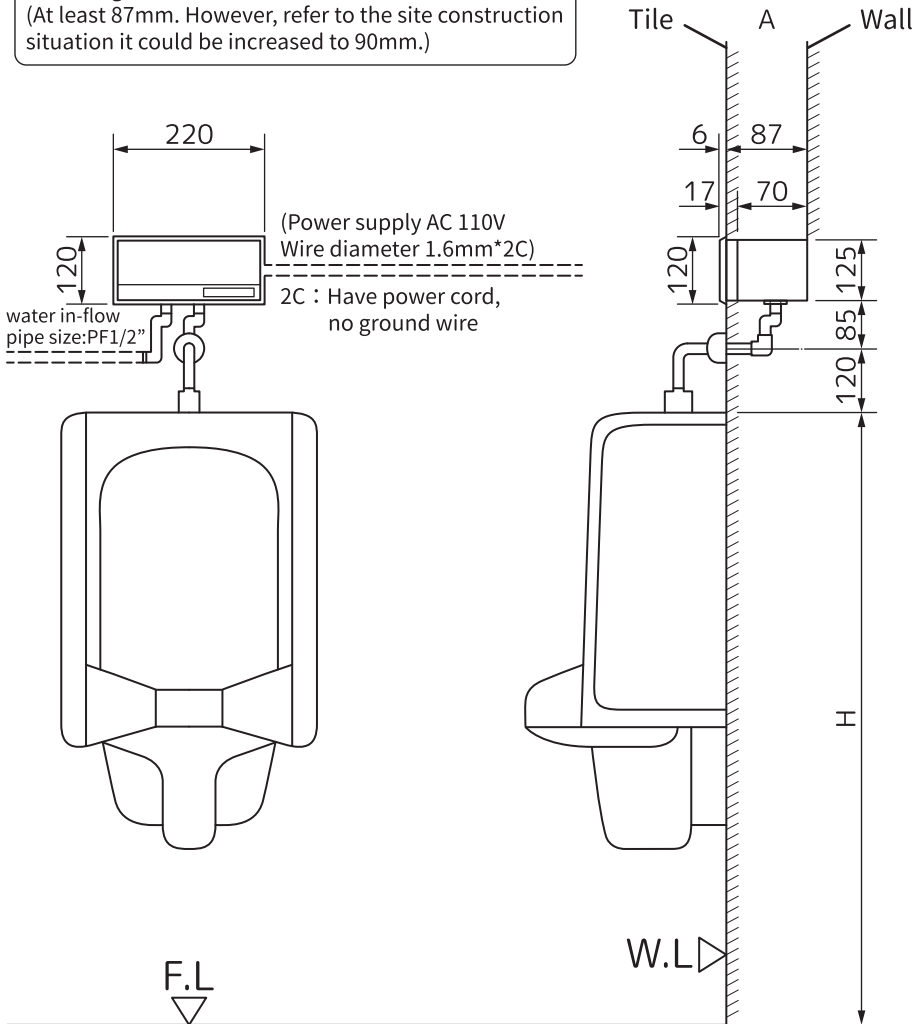
# Standard Installation Diagram

## Model: Plate

### Cautions:

When installing the product, the A dimension depth must be greater than 87mm.

(At least 87mm. However, refer to the site construction situation it could be increased to 90mm.)



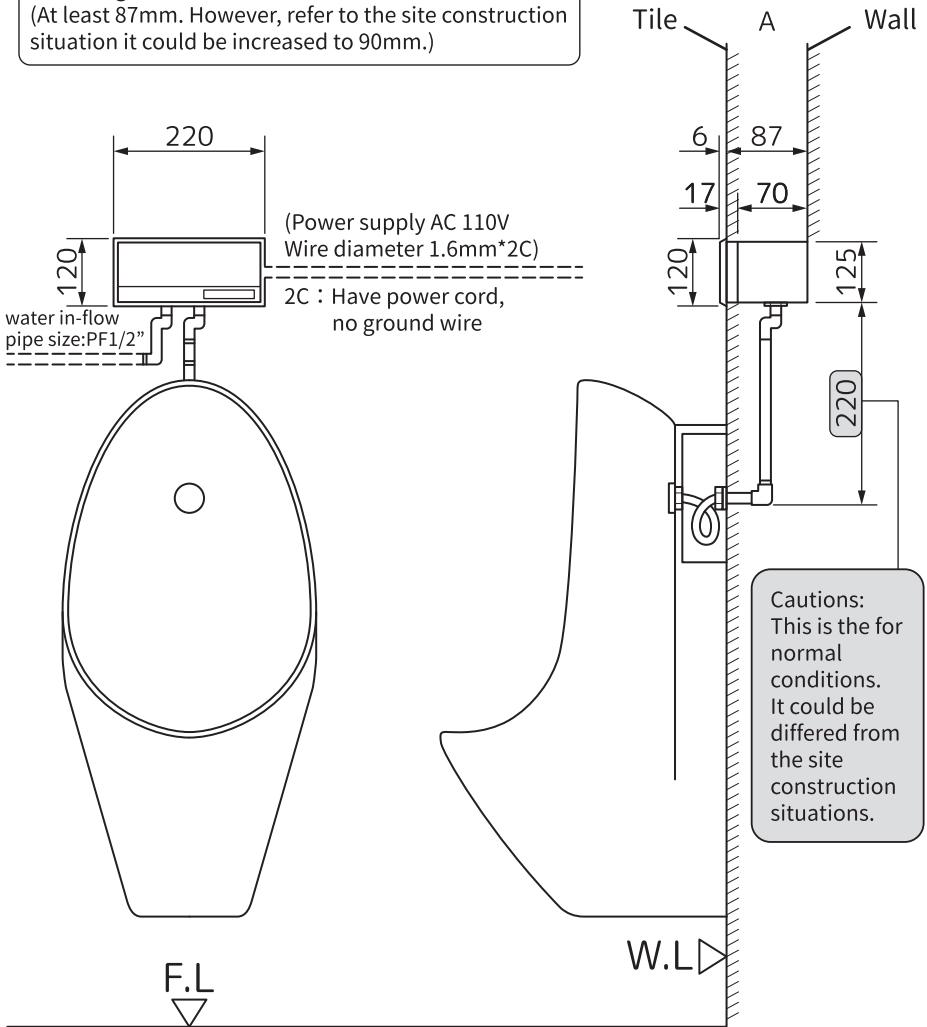
# Back Inlet Installation Diagram

## Model: Plate

### Cautions:

When installing the product, the A dimension depth must be greater than 87mm.

(At least 87mm. However, refer to the site construction situation it could be increased to 90mm.)



Cautions:  
This is the for  
normal  
conditions.  
It could be  
differed from  
the site  
construction  
situations.

# Installation:

1. Verify that the distribution voltage specifications match the product specifications.
2. When installing this product, the reserved hole depth A should be greater than 87mm. (Figure 1 is the correct installation diagram)

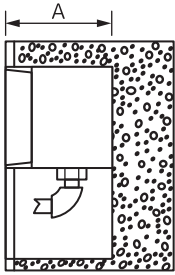


Figure 1

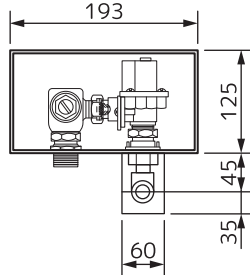


Figure 1 Front view

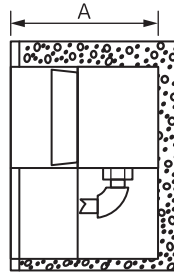


Figure 2  
(Too deep)

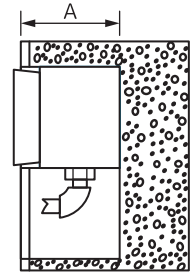


Figure 3  
(Not enough space)

※Figure 2 and Figure 3 show the wrong type of the reserved hole depth.

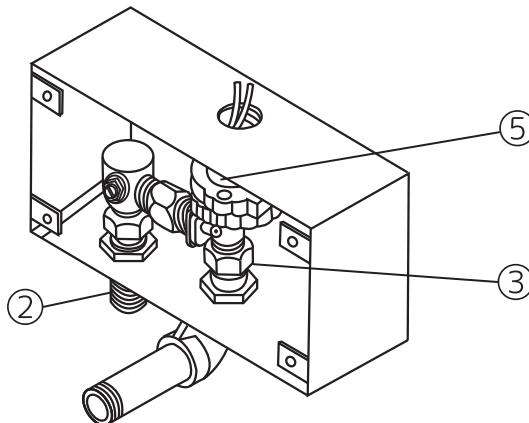
3. Install this product

**AC Square concealed flusher (Model: ) or**

**AC Concealed flush plate (Model: ), etc.**

When constructing the formwork, the reserved hole depth is shown as in the front view Figure 1 (if it is brick wall, a similar size of reserved hole depth should be knocked out).

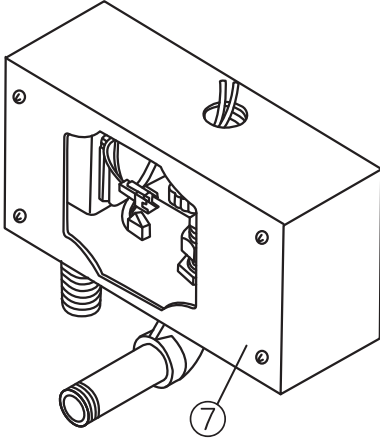
4. The part 2 and 3 are respectively screwed into the inlet and outlet holes of the parts box, and then the part 5 are screwed into the inlet and outlet joints, and the transformer is locked at a predetermined position according to the Product Parts Disassemble Diagram.



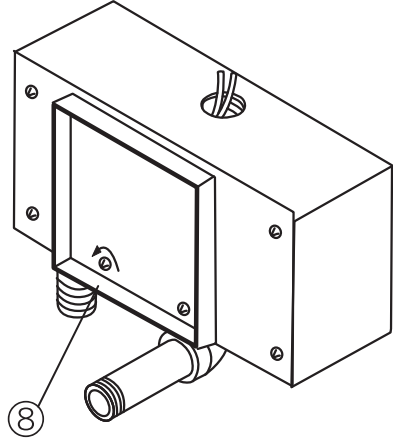


# Installation:

5. Lock the part 7 outer plate to the open end of the parts box with screws.

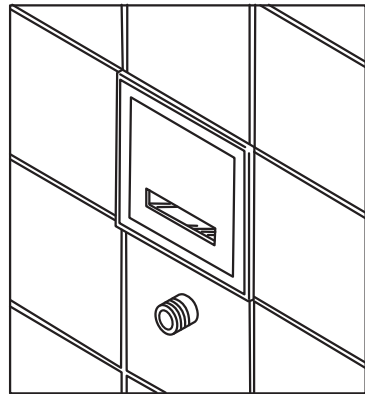
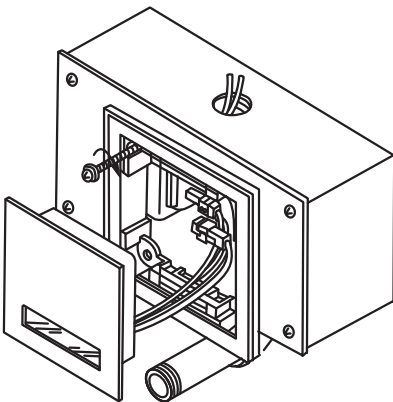


6. Then take the anchor plate 8 and lock it on the outer plate.



7. After completing the RC wall and removing the formwork, the anchor plate can be removed. Lock the ABS outer casing on the outer plate (SUS304#model) with long screw. Then clamped the transformer terminal and the solenoid valve set terminal to the terminals of the sensor cover. The installation will be completed after fixing the sensor cover on the outer plate.

8. ABS models require the plastic long screws attached to the accessories.

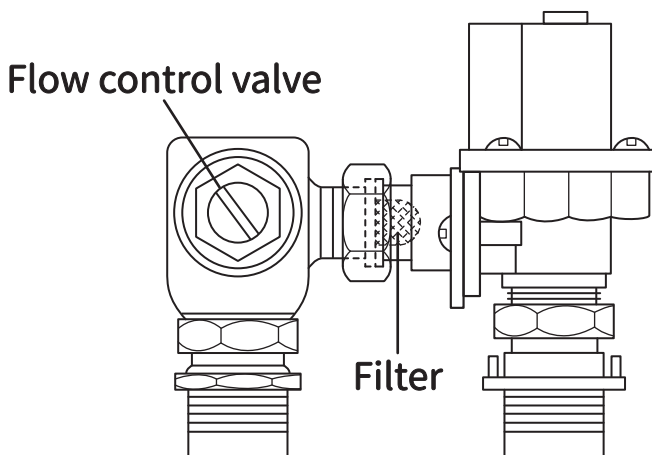


## Cautions:

- \* For pipeline testing, it should be confirmed that there is no water leakage in the pipeline.
- \* When finishing the wall surface, place the ABS sensor cover and pay attention to the "up" position on the upper end of the frame (SUS304# model).
- \* The parts after no.11 should be installed as shown in Product Parts Disassemble Diagram.

## Water volume adjustment method:

- \* The sensor panel can be pulled out using the suction cup (SUS304#model).
- \* Use a flathead screwdriver to move the sensor cover to the left and right (ABS model).
- \* Use a flathead screwdriver to rotate the flow control valve of the solenoid valve inlet connector (part 2). To close the water source turn it in clockwise direction and to open the water source, turn in counterclockwise.
- \* When the water outlet is blocked, the nut of the solenoid valve can be unscrewed and the filter (part 6) can be removed for cleaning.



# Product Specification and Applicable Scope

Description		AC Concealed flush plate	DC Concealed flush plate
Specification	Power source	AC 110V 50/60Hz AC 220V (Build-to-Order)	AA 1.5V×4
	Power consumption	Lower than 10W	Lower than 10W
	Way of flushing	Two speeds	Two speeds
	Sensor distance	50 cm (could be adjusted)	50 cm (could be adjusted)
	Confirming time	About 3 seconds	About 3 seconds
	1st speed flushing	About 1 second	About 1 second
	2nd speed flushing	About 6 seconds	About 6 seconds
	Water In-flow pipe size	PF1/2	PF1/2
	Outflow volume	Above 6 liters /min.	Above 6 liters /min.
	Applicable water pressure	0.3 to 6 kgf/cm <sup>2</sup>	0.3 to 6 kgf/cm <sup>2</sup>
	Way of installation	Embedded/Ut	Embedded/Ut
	External size	120×220 cm	120×220 cm

Description		AC Square concealed flusher	DC Square concealed flusher
Specification	Power source	AC 110V 50/60Hz AC 220V (Build-to-Order)	AA 1.5V×4
	Power consumption	Lower than 10W	Lower than 10W
	Way of flushing	Two speeds	Two speeds
	Sensor distance	50 cm (could be adjusted)	50 cm (could be adjusted)
	Confirming time	About 3 seconds	About 3 seconds
	1st speed flushing	About 1 second	About 1 second
	2nd speed flushing	About 6 seconds	About 6 seconds
	Water In-flow pipe size	PF1/2	PF1/2
	Outflow volume	Above 6 liters /min.	Above 6 liters /min.
	Applicable water pressure	0.3 to 6 kgf/cm <sup>2</sup>	0.3 to 6 kgf/cm <sup>2</sup>
	Way of installation	Embedded/Ut	Embedded/Ut
	External size	120×120 cm	120×120 cm

**\*When the water pressure is more than 2 kgs,  
please install a pressure reducing valve.**

## Warrenty Card

Purchase date (YYYY/MM/DD)		Model Number	
Dealer's store stamp		<b>Notes:</b> Thank you for using our products. The warranty begins from the date of purchase and last for one year. However, if one of the following circumstances occurs, the cost or service fee may be charged during the service period. 1. Not presenting this warranty card or no purchase date and dealer's store stamp. 2. Damage caused by carelessness or error. 3. Damage caused by self-modification. 4. The damage occurred after the purchaser moves or transports by itself after installation. 5. Damage caused by natural disasters	

●Installation and Operation Manual must be given to the user.

Note:

1. The method of installation is very important, please entrust the dealer or the conduit & electricity service trade to install.
2. The power cord cannot be replaced without authorized.